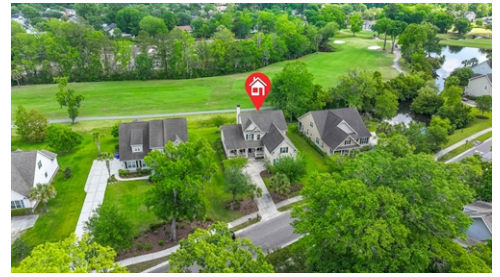


Welcome Home!



\$ 750,000



Charleston, SC 29414

- » Beds: 5 | Baths: 2 Full, 1 Half
- » MLS #: 25023372
- » Single Family | 2,903 ft²
- » HOME QUALIFIES FOR A VA LOAN ASSUMPTION RATE 2.375%
- » Located ON THE GOLF COURSE in a coveted Golf Course Community with Golf Club, Pool & Fitness Center Memberships Available
- » More Info: 265ShadowmossPkw.com



Jennifer Cahill

(980) 406-8351 (Mobile)

CharlestonHomesByJennifer@gmail.com

<http://www.CharlestonHomesByJennifer.com>



Realty ONE Group Coastal

654 Coleman Boulevard

Suite #100

Mt. Pleasant, SC 29464

(980) 406-8351

HOME QUALIFIES FOR A VA LOAN ASSUMPTION RATE 2.375% Welcome to your golfer's paradise, where indoor-outdoor living meets Lowcountry charm. Nestled along the 6th fairway of the prestigious Shadowmoss Golf & Country Club, this home offers sweeping views of lush greens right outside your back door. Whether you're a seasoned golfer or just enjoy the view, every day feels like a retreat. Life here is more than just a home—it's a community. From neighborhood gatherings and lively Food Truck Fridays to Music Bingo, Team Trivia, holiday golf cart parades, tournaments, and charity events, Shadowmoss is brimming with opportunities to connect, celebrate, and make lasting memories with friends and neighbors. Step inside to a light-filled, airy home designed for both relaxation and entertaining. Soaring vaulted ceilings and expansive windows flood the family room with sunshine while framing panoramic golf course views. Cozy up by the wood-burning fireplace, host gatherings with ease, or simply take in the beauty that surrounds you. The kitchen is as functional as it is inviting, featuring granite countertops, custom cabinetry, abundant storage, and a spacious pantry. The first-floor

